

SR wheel block system _ modular, universal, powerful


- › **Universal** _ can be used for wheel loads from 5 t to 30 t in six frame sizes
- › **Flexible** _ five standard configurations for connecting to customers' supporting structures
- › **Reliable** _ SF drives for every requirement, as low-maintenance direct drives
- › **Your choice** _ on request, drives equipped with SFD frequency inverter mounted directly on motor
- › **Maintenance-friendly** _ wheel can simply be pulled out from the front of the block
- › **Field-proven** _ series components ensure maximum performance
- › **Compakt** _ with space-saving pancake gear on request

SR wheel block system _

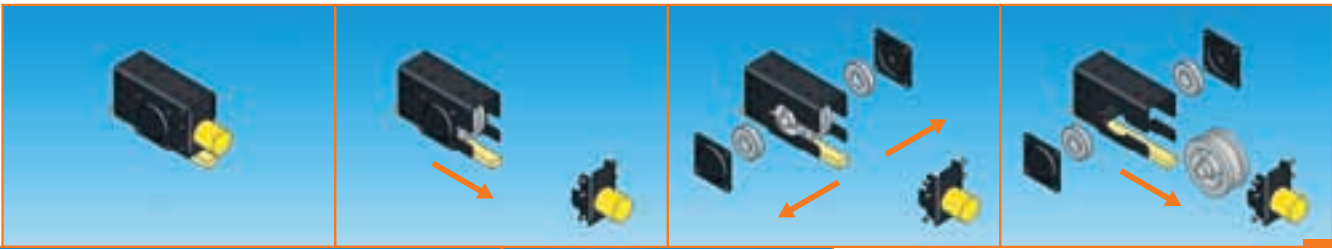
First-class travel



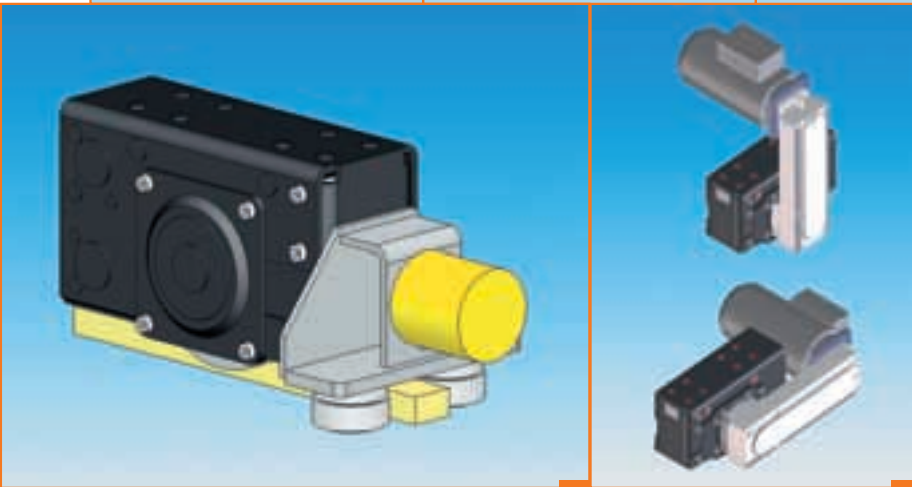
Know-how

Over 130 Jahre Tradition, over 130 years of practical approach, competence and experience. Our history is characterised by the constant impetus for innovations and significant modernisations. Lifting and transporting by the most direct route also means lifting and transporting for the success and growth of our customers. To ensure this we venture to offer our peak performance. STAHL CraneSystems is one of the world's leading brand names. As our customer you benefit from our expertise as a manufacturer of lifting technology, drive technology and control technology. The components of the new modular SR wheel block system are taken from the tried-and-tested series programme. This systematically modular system is designed for wheel loads from 5 t to 30 t. A wide range of different mounting methods guarantees universal and extremely flexible use of STAHL CraneSystems's wheel blocks. As with all our components and systems, the SR wheel block system is available as an option in -protected design.

- 1 **Affixed connection Type A** _ a connecting flange is used to weld the wheel block end to a steel structure, the connection can be dismantled.
- 2 **Screwed connection Type S** _ a connecting flange is used to bolt the wheel block end to a steel structure.
- 3 **Welded connection Type W** _ the wheel block end is welded directly to the supporting structure without any inter-mediate flange.
- 4 **Head connection Type H** _ the wheel block is bolted on at the top.
- 5 **Inserted connection Type I** _ the wheel block is plugged into a hollow profile and secured with bolts.



9



7

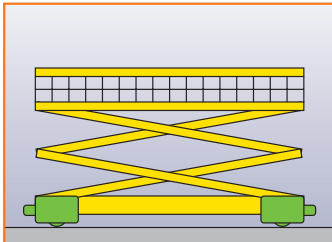
8

- 6 | The wheel blocks can be used universally. Here they are the basis of the crab of an AS70 wire rope hoist.
- 7 | The guide rollers are positive locking and securely mounted, and can be used even on relatively flat rails.
 - ➔ up to SR 200: rail height > 30 mm
 - ➔ from SR 250: rail height > 40 mm
- 8 | As an option, the wheel blocks can be equipped with slimline pancake gears.
- 9 | Wheel can simply be pulled out from the front, without having to remove the unit from the supporting structure.

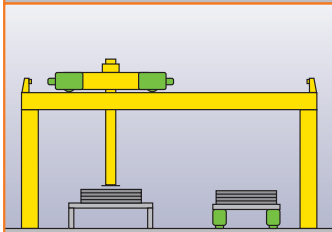
- › **The housing** _ Up-to-date manufacturing techniques using lasered sheet steel parts guarantee top quality. The housing is enclosed on five sides, thus ensuring the important inherent stability and dimensional accuracy of the wheel block. Graduated frame sizes are available for the various wheel loads.
- › **The wheel** _ The wheel, guided by flanges on both sides, is made of spheroidal graphite cast iron EN-GJS-700 (GGG70). This is the guarantee for quiet, runway-saving travel. The self-lubricating characteristic ensures high efficiency and reduces wear to the minimum. The lifetime lubricated roller bearings are maintenance-free. They are mounted inside the housing and thus also protected from external effects.
- › **The drives** _ Reliable, flexible and compact. From pole-changing direct drive to SFD frequency inverter to space-saving pancake gear, there is a choice of customer-optimised drive solutions.

- › **The guide rollers** _ The standard guide roller version is designed for flanged wheels. For particular applications, infinitely adjustable guide rollers can be mounted on the wheel block. They are employed in the case of extra wide rails for example or to reduce the travelling resistance. The use of guide rollers is recommended to reduce skewing forces and minimise wear on the runway.
- › **Assembly** _ Universal, flexible and simple. The ready-prepared mounting surfaces offer the most versatile connection methods for the SR wheel block by bolting, welding or simply plugging in.
- › **Wheel-changing** _ The state of the wheel flanges can easily be checked. If necessary, the wheel can simply be pulled out from the front of the block after removing the end flange.

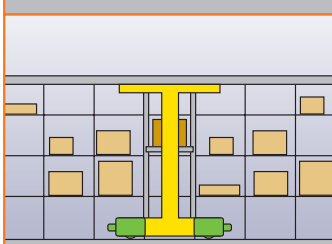
Applications



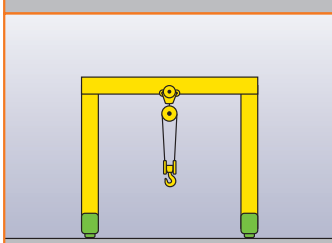
Lifting platforms



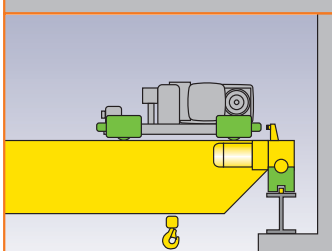
Transportation systems



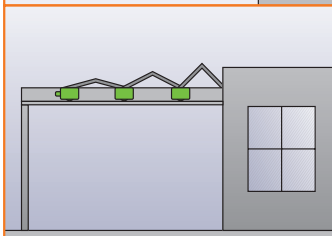
Storage and retrieval machines



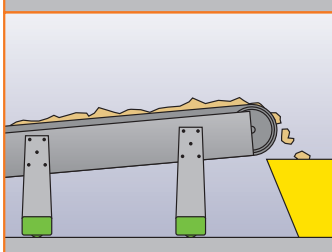
Portal cranes



Crane installations



Architectural applications

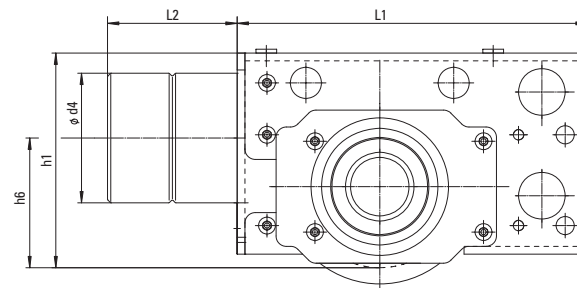


Conveying systems

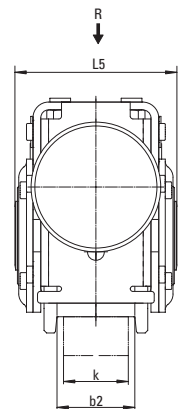
Our Service

STAHL CraneSystems supplies more than components and the SR wheel block system. We offer you our constructive cooperation in selecting the correctly dimensioned wheel block system and during its rapid installation. STAHL CraneSystems specialists will show your staff whatever is necessary and important. Our scope of supply includes, apart from our know-how and our many years of experience in the field of crab design, a detailed Product Information brochure comprising all technical data. In the future you will profit from our technical assistance and our Original Parts Service right around the clock, all over the world. Just contact us, we look forward to your enquiries.

Side view



Front view



Technical data (right to alterations reserved)

	SR 125	SR 160	SR 200	SR 250	SR 315	SR 400
Wheel Ø in mm	125	160	200	250	315	400
Max. wheel load in t	5	7	10	16	22	30
L1 in mm	273	345	408	437	500	658
L2 in mm	100	125	125	160	160	200
L5 in mm	135	172	189	208	230	322
h1 in mm	165	190	235	295	350	440
h6 in mm	100	100	100	100	100	155
Ø d4 in mm	100	125	125	160	160	200
Rail width k in mm	40, 50	40, 50, 60	40, 50, 60	40, 50, 60, 70	50, 60, 70, 80	60, 70, 80, 100
b2 in mm	50, 60	52, 62, 72	54, 64, 74	54, 56, 74, 84	64, 74, 84, 94	75, 85, 95, 115

→ www.stahlcranes.com

STAHL CraneSystems GmbH, Daimlerstr. 6, 74653 Künzelsau, Germany
 Tel +49 7940 128-0, Fax +49 7940 55665, marketing@stahlcranes.com

